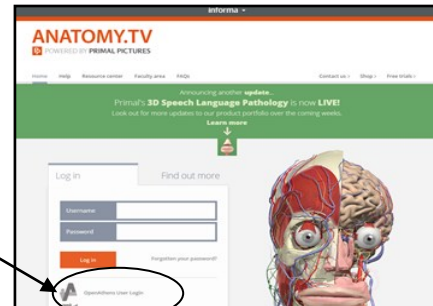


How to use Anatomy TV

Anatomy TV produced by Primal Pictures is an interactive resource which provides access to 3D anatomical structures, clinical slides, dissections, animations and much more.

Accessing Anatomy TV

To access Anatomy TV, go to <http://www.anatomy.tv>, select 'Open Athens user login' and log in with your Open Athens username and password.



Once you have entered a valid username and password you will be taken to the homepage. The resources you can access are:

- 3D Atlas (default option)
- Functional Anatomy



3D Atlas

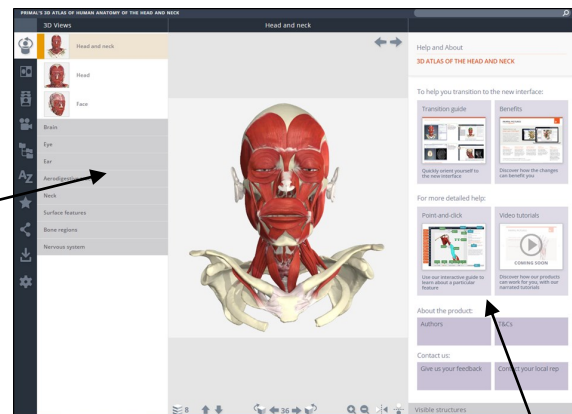
You can select which part of the body you want to look at in 3D. This mode enables you to interact with the 3D model. The Anatomy tab features three panes, Viewing, Text and Browser panes.

Viewing pane

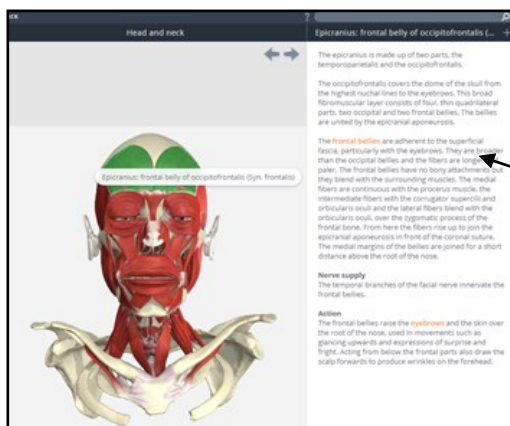
This features the 3D Anatomy Viewer

Hovering over a structure with your mouse pointer will reveal the structure's name and clicking on the structure will highlight it.

You can turn off the 'rollover labels' in Settings (in the browser pane) if you wish to test yourself on the names of structures in the viewing window.



Help Guides



Text pane

If you select an area of the image, detailed anatomical text will appear on the right-hand side of the screen. Most texts include links to related content.

Browser pane

You can select the icons to change the media to view your selected area



Views (default)

Interactive 3D Anatomy models.



Slides

All the 2D illustrations and slides (clinical photographs, dissections etc) contained on the product.



Anatomical structures

The Structures tab lists only those structures included in the current view. You can select a structure name from the list to highlight that structure in the 3D anatomy viewer. The breadcrumb trail shows the structure's location.



Imaging

Cross sectional anatomy linked to MRI in 3 planes axial, coronal and sagittal.



Movies

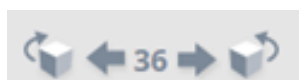
All the movie clips contained on the product.

Toolbar



Adding and removing layers

Every 3D view features a sequence of images. All 3D views also feature numerous layers. You use the control buttons on the bottom toolbar to navigate through them.



Rotating the image

These 3D sequences usually take the form of rotations, enabling you study the anatomy through 360 degrees.

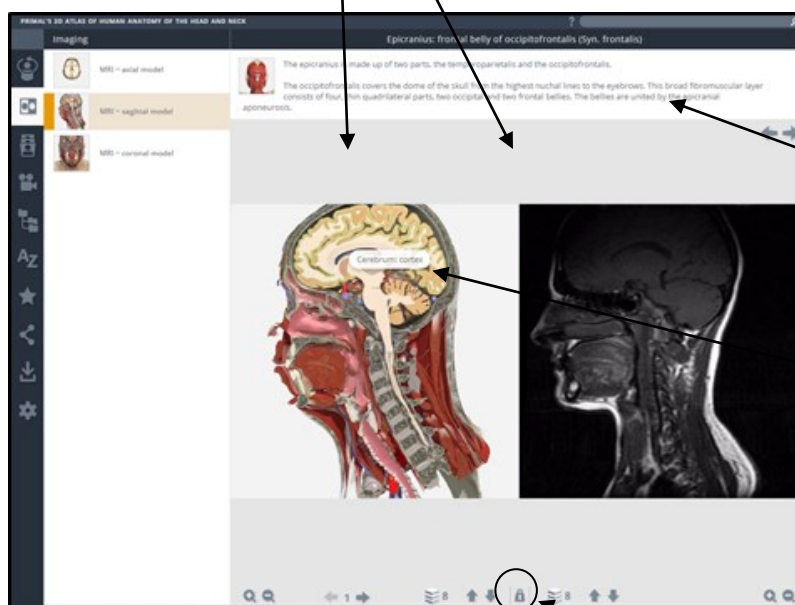


Zoom in / out and change orientation

The zoom controls allow a closer look at the model. The flip controls are useful when you want to show the opposite side of the body, or change the views' vertical orientation.

Imaging

The Imaging tab features side-by-side viewing panes, enabling you to compare the 3D model with equivalent scans.



In the MRI tab, the text pane is located at the top of the interface.

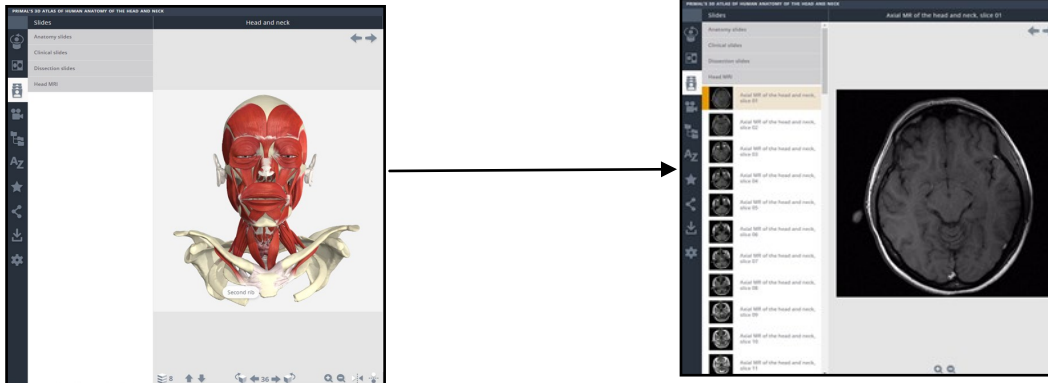
Clicking on the structure will highlight an area and reveal the associated text.

Note that the Imaging slides are taken from a different specimen to the 3D model.

By default the layer buttons control both panes simultaneously. However, you can unlink them by selecting and 'unlocking' the padlock icon.

Slides

The Slides tab contains clinical photographs, scans and diagrams. You can choose a slide from the menu to view it in the viewing pane.



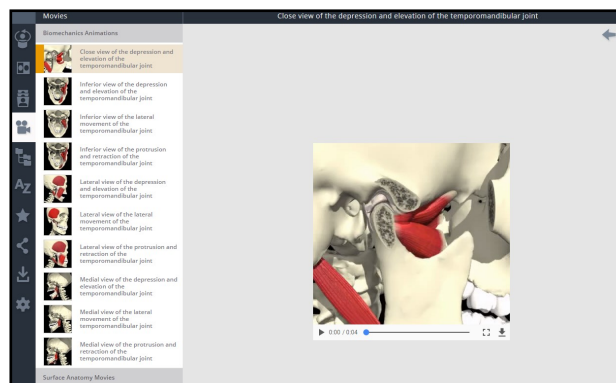
The Slides tab content is divided into four types. Anatomy slides are annotated diagrams or photographs. The Clinical slides consist of photographs, scans and diagrams of common and notable clinical conditions. Dissection slides are fully selectable photographs taken from real-life dissections.

The MRI slides are collected here, allowing you to export them for use in your own presentations.

Movies

The Movies tab contains both 3D animations of muscle movements and real life surface anatomy movies. It features a movie Viewing window on the right and a Browser pane on the left.

Movies and animations can be saved to your computer for you to use in presentations.



Other controls

The toolbar on the left-hand side of the of the interface features a variety of useful controls.



You can browse an A-Z alphabetical list of subjects



You can bookmark your favourite images and arrange them into folders.



This button will generate a hyperlink which you can copy and share with colleagues or paste into a Learning Management System to link students directly to content.



Your favourite images, slides, movies, and animations can be saved into your own folders.



In Settings, you can hide the structure title and rollover labels, adjust colours of the highlight or background and adjust the run-speed of views.

Functional anatomy

With this section, you can view the whole body or select parts of the body to look at.

Slides

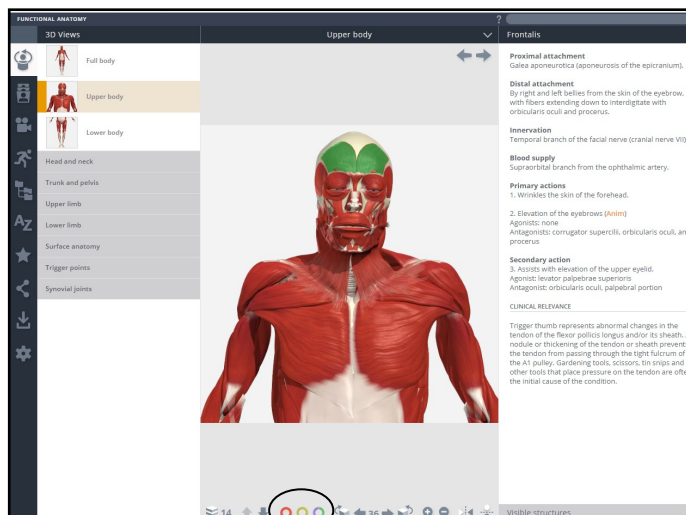
You can select a structure in an interactive slide, such as the Dissections to display accompanying structure text.

Movies

They can be browsed visually and can now be played full screen.

Animations

They show muscle movement that can be rotated 360 degrees. The animation can be rotated whilst it is playing to view the movement from different angles, and structures can be selected during playback to display its name, along with descriptive text.



You can use the three vessel switches to add any combination of arteries, nerves, veins and lymph to the model.

Saving

You can save views, enabling you to add them to presentations, lecture notes, and assignments. Views are saved and printed with a transparent background. You can choose from a wide range of highlight colours, so that your selected structure stands out from the those around it.

Logging off

Once you have finished your session, please ensure you use the LOG OFF button or you may not be able to login again until after the time out period (default time out is 15 minutes)

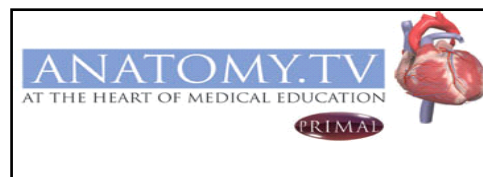
Use of images

NON COMMERCIAL use of the images is **royalty free** - so for private educational use in PowerPoint presentations, lectures, patient education.

Any **COMMERCIAL OR PUBLIC DOMAIN USE** of the images including in books, websites, videos, DVD's and any other use of the images in the public domain (e.g. advertising) will be subject to **formal permission and an additional license fee** - please contact Primal Pictures with any queries.

Helpsheet produced using material provided by
Primal Pictures Ltd, 3rd Floor, 119 Farringdon Road, London
EC1R 3DA Tel: 0207 637 1010

Email: dan@primalpictures.com Web: www.primalpictures.com



Visit our website at <https://www.wuth.nhs.uk/choose-us-for-library-and-knowledge-services/> or contact us at:

McArdle Library, Arrowe Park Hospital
Tel: 0151 604 7223 / ext. 8610
E-mail: wuth.lks@nhs.net

Library, Clatterbridge Cancer Centre
Tel: 0151 556 5299 / ext. (56)5299
E-mail: wuth.lks@nhs.net



WUTHstaff

wuth.nhs.uk/staff