

Using DynaMed Plus

DynaMed Plus is an online database that provides summaries of evidence on a wide range of topics and provides the latest information to answer your clinical questions. It is designed for point-of-care use and is updated on a daily basis to keep you up to date with current medical information.

How to access DynaMed Plus from home

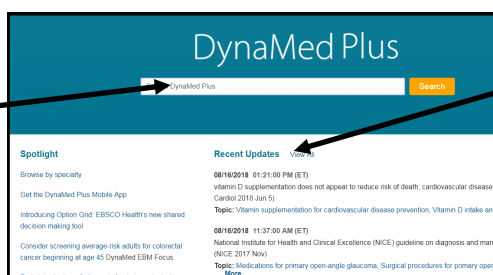
1. Go to <https://www.evidence.nhs.uk/>
2. Select the link to 'Journals and Databases'.
3. In the Open Athens box, select the link to 'Log in to Open Athens'.
4. Enter your Email address or User name and Password.
5. Select the link to 'EBSCO Databases, Discovery Service, eBooks, Point of Care Products, DynaMed and Journal Collections'
6. Select the link to DynaMed Plus.

How to access DynaMed Plus from a Wirral University Teaching Hospital computer

Go to <https://dynamed.ebscohost.com/user/login> and select the Institution tab. A new window will open. Select the link to 'OpenAthens login' and another window will open where you can enter your Athens account details. You will then be taken to the DynaMed Plus search page.

Using DynaMed Plus

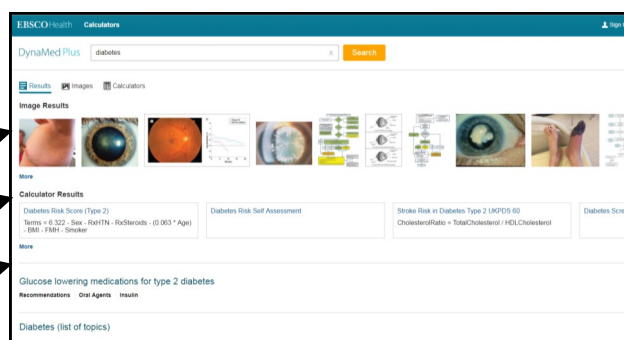
Use the search box to enter your search term or browse the index by using the A-Z list.



Select Recent updates to browse the list of the most recent additions to Dynamed Plus

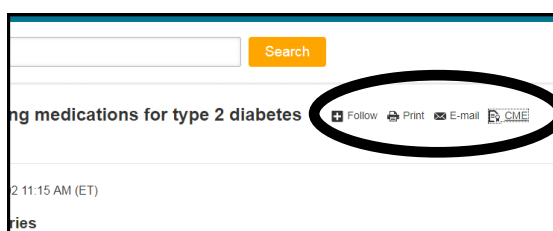
When you have entered your term and selected search, the results will appear. They are displayed as:

- Images
- Calculator results
- Summaries of related subject areas



When you have selected a topic, a summary will appear with options to:

- Follow (set up alerts)
- Email the summary
- Print the summary
- CME—complete a form to accrue CME points



Please turn over for details on how to get the Dynamed Plus mobile app



In order to access DynaMed Plus on your mobile device follow the instructions below:

1. Access DynaMed Plus from the hospital or via an individual subscription.
2. Under the heading 'Spotlight', select the link to 'Get the DynaMed Plus Mobile App'
3. You will be asked to enter your email address so that you can receive an email to authenticate your access.
4. Download the app from your mobile devices' application store. Once downloaded, open the app and accept the terms and conditions
5. Open the DynaMed Plus mobile email from your mobile device and select the 'authentication key link in the email to authenticate the app.

Note: After 48 hours, users will need to request a new authentication key.

6. You should get an 'Authentication Successful' message. Choose whether you would like to install the app with or without images.
7. You will now be able to access Dynamed Plus on your mobile device.

Your feedback is important: Your feedback on the clinical value of DynaMed Plus will be very useful in evaluating the impact DynaMed Plus has had within the Trust. Please provide your feedback to wuth.lks@nhs.net

Visit our website at www.wuth.nhs.uk/patients-and-visitors/services//library or contact us at:

McArdle Library, Arrowe Park Hospital
Tel: 0151 604 7223 / ext. 8610
E-mail: wuth.lks@nhs.net

Library, Clatterbridge Cancer Centre
Tel: 0151 556 5299 / ext. (56)5299
E-mail: wuth.lks@nhs.net