

STAKEHOLDER IN TOUCH



Wirral University
Teaching Hospital
NHS Foundation Trust

WIRRAL UNIVERSITY TEACHING HOSPITAL STAKEHOLDERS NEWSLETTER

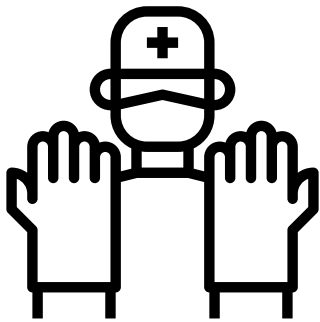


Welcome

Welcome to the first edition of Stakeholder in Touch, WUTH's Stakeholder newsletter, with an update on key developments at our Trust.

We're sharing news on being shortlisted in national awards for the work of our amazing staff, progress in addressing elective surgery backlogs through our newest facility, the Cheshire and Merseyside Surgical Centre, highlighting our investment in a further surgery robot and sharing the celebrations for the NHS at 75.

Key performance headlines from July's WUTH Board are:

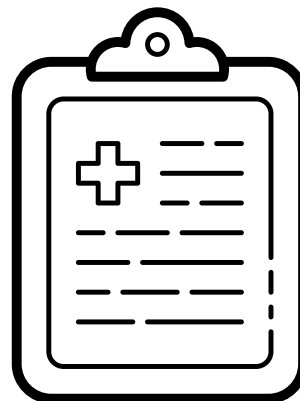


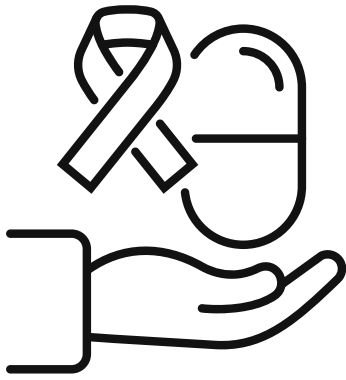
REFERRAL TO TREATMENT

The national standard is to have no patients waiting over 104 weeks from March 2023 and to eliminate routine elective waits of over 78 weeks by April 2023 and 65 week waits by March 2024. WUTH has **no patients over the 104-week target and only 10 patients at 78+ weeks (the cases relate to patient choice and complexity).** Against a picture of increased demand, the Trust has 1479 patients waiting +52 weeks and is on track to reduce this to zero by March of next year.

ELECTIVE ACTIVITY

Like many trusts in the NHS, our recovery of activity has been impacted by the national industrial action across a number of staff groups although in the latest published figures, the **Trust showed a performance of 106% against plan for outpatients and 105% against the elective plan.** The Trust would have achieved the activity plan in June, but this has been impacted by the Junior Doctors' Industrial Action.





CANCER PERFORMANCE

In the target of 2 Week Waits for cancer treatment, the performance **has improved since April and is forecast to be on track for June 2023**- on the back of increases in demand to Colorectal, Breast, Skin and Urology services.

WUTH ACHIEVEMENT OF THE FASTER DIAGNOSIS STANDARD

WUTH was performing **above the National standard and in a faster timescale - at 75.33%** in April, against a National target of 75% (to be achieved by March 2024), which is positive for patient experience for patients receiving timely diagnosis.



We are working hard to address the challenges, like so many colleagues in the acute sector of the NHS and, as always, seeking to improve our patients' experiences. We hope you enjoy reading about these developments at Arrowe Park, Clatterbridge and the Wirral Women and Children's Hospitals and at our trust as a whole.

If you have any feedback, or topics you would like us to cover please contact us.

Sir David Henshaw, WUTH Chair and Janelle Holmes, Chief Executive

LATEST NEWS

VISIT BY PROFESSOR SIR STEPHEN POWIS

Wirral University Teaching Hospital and partners recently hosted a prestigious visit by Professor Sir Stephen Powis, Medical Director for NHS England, to Wirral's healthcare system. This started with a visit to primary care services at Eastham Healthcare Centre and Clatterbridge Diagnostics Centre at Clatterbridge Cancer Centre, which is a joint initiative with Wirral University Teaching Hospital.



Professor Powis was then given a tour of Cheshire and Merseyside Surgical Centre, one of the national elective surgical hubs set up with national NHS funding, where he took part in a simulated exercise with the state-of-the-art Da Vinci surgical robot. Professor Powis was also shown the new £2.8 million Dialysis Unit at Arrowe Park Hospital which has vastly improved experience for patients receiving dialysis treatment. During the visit he was also given a guided tour of the development of the urgent and emergency care facility at Arrowe Park Hospital which is being built as part of a £30 million capital investment.



FINALIST IN HSJ PATIENT SAFETY AWARDS AND IN NURSING TIMES AWARDS

The Trust has been shortlisted as a finalist in the HSJ Patient Safety Awards, in the Learning Disabilities Initiative of the Year category, for a project helping adults with autism who are undergoing elective surgery. The project is also a finalist in the Nursing Times' Dame Elizabeth Anionwu Award for Inclusivity in Nursing and Midwifery category.

The Supporting Treatment in Additional-needs Requirements (STAR) Project involved the opening of a sensory unit at Arrowe Park Hospital in March which was the first of its kind in the North West of England to be set up specifically for adult patients with autism and additional needs, who are having planned surgery.

It was officially opened by autism campaigner Christine McGuinness.

CHESHIRE AND MERSEYSIDE SURGICAL CENTRE

Cheshire and Merseyside Surgical Centre opened its doors at Clatterbridge Hospital in November last year with two new 'modular' theatres as part of phase one of the project. The state-of-the-art facility was an innovation in design, whereby the theatres were largely built as modules off-site and constructed on to the side of the existing hospital theatres, allowing for the new theatres to be developed as quickly as possible. This is one of the national elective surgical hubs created using national funding with the aim of clearing the backlog of patients waiting for elective surgery, post-pandemic. It is already benefiting many patients across Cheshire and Merseyside.



The second phase of the project is set to be completed later this year with two further 'modular' theatres. When both phases are complete, the centre will enable the Trust to treat an extra 6,000 elective patients a year which is a fantastic outcome for the region. Currently there are eight surgeons from the Countess of Chester who operate regularly at the centre as well as the teams of WUTH surgeons and theatre staff.

650 urology procedures and more than 150 general, breast and gynae procedures. Up to March 2023, the centre had treated 1.197 patients from across the region.